



Food Product Dating

"Sell by Feb 14" is a type of information you might find on a meat or poultry product. Are dates required on food products? Does it mean the product will be unsafe to use after that date? Here is some background information which answers these and other questions about product dating.

What is dating?

"Open Dating" (use of a calendar date as opposed to a code) on a food product is a date stamped on a product's package to help the store determine how long to display the product for sale. It can also help the purchaser to know the time limit to purchase or use the product at its best quality. It is not a safety date. After the date passes, while not of best quality, the product should still be safe if handled properly and kept at 40 °F or below for the recommended storage times listed on the chart (see below). If product has a "use-by" date, follow that date. If product has a "sell-by" date or no date, cook or freeze the product by the times on the chart below.

Is dating required by federal law?

Except for infant formula (see below), product dating is not generally required by Federal regulations. However, if a calendar date is used, it must express both the month and day of the month (and the year, in the case of shelf-stable and frozen products). If a calendar date is shown, immediately adjacent to the date must be a phrase explaining the meaning of that date such as "sell by" or "use before."

There is no uniform or universally accepted system used for food dating in the United States. Although dating of some foods is required by more than 20 states, there are areas of the country where much of the food supply has some type of open date and other areas where almost no food is dated.

What types of food are dated?

Open dating is found primarily on perishable foods such as meat, poultry, eggs and dairy products. "Closed" or "coded" dating might appear on shelf-stable products such as cans and boxes of food.

Types of Dates

- A **"Sell-By"** date tells the store how long to display the product for sale. You should buy the product before the date expires.
- A **"Best if Used By (or Before)"** date is recommended for best flavor or quality. It is not a purchase or safety date.
- A **"Use-By"** date is the last date recommended for the use of the product while at peak quality. The date has been determined by the manufacturer of the product.
- **"Closed or coded dates"** are packing numbers for use by the manufacturer.

Safety After Date Expires

Except for "use-by" dates, product dates don't always refer to home storage and use after purchase. "Use-by" dates usually refer to best quality and are not safety dates. But even if the date expires during home storage, a product should be safe, wholesome and of good quality if handled properly and kept at 40 °F or below. See the accompanying refrigerator charts for storage times of dated products. If product has a "use-by" date, follow that date. If product has a "sell-by" date or no date, cook or freeze the product by the times on the chart below.

Foods can develop an off odor, flavor or appearance due to spoilage bacteria. If a food has developed such characteristics, you should not use it for quality reasons.

If foods are mishandled, however, foodborne bacteria can grow and cause foodborne illness — before or after the date on the package. For example, if hot dogs are taken to a picnic and left out several hours, they might not be safe if used thereafter, even if the date hasn't expired.

Other examples of potential mishandling are products that have been: defrosted at room temperature more than two hours; cross contaminated; or handled by people who don't use practice sanitation. Make sure to follow the handling and preparation instructions on the label to ensure top quality and safety.

Dating Infant Formula

Federal regulations require a "use-by" date on the product label of infant formula under FDA inspection. If consumed by that date, the formula must contain not less than the quantity of each nutrient as described on the label. Formula must maintain an acceptable quality to pass through an ordinary bottle nipple. If stored too long, formula can separate and clog the nipple.

The "use-by" date is selected by the manufacturer, packer or distributor of the product on the basis of product analysis throughout its shelf life, tests, or other information. It is also based on the conditions of handling, storage, preparation, and use printed on the label. Do not buy or use baby formula after its "use-by" date.

What do can codes mean?

Cans must exhibit a packing code to enable tracking of the product in interstate commerce. This enables manufacturers to rotate their stock as well as to locate their products in the event of a recall.

These codes, which appear as a series of letters and/or numbers, might refer to the date or time of manufacture. They aren't meant for the consumer to interpret as "use-by" dates. There is no book or Web site that tells how to translate the codes into dates.

Cans may also display "open" or calendar dates. Usually these are "best if used by" dates for peak quality.

In general, high-acid canned foods such as tomatoes, grapefruit and pineapple will retain best quality on the shelf for 12 to 18 months; low-acid canned foods such as meat, poultry, fish and most vegetables will retain best quality on the shelf for 2 to 5 years — if the can remains in good condition and has been stored in a cool, clean, dry place.

Dates on Egg Cartons

Use of either a "Sell-by" or "Expiration" (EXP) date is not federally required, but may be State required, as defined by the egg laws in the State where the eggs are marketed. Some State egg laws do not allow the use of a "sell-by" date.

Many eggs reach stores only a few days after the hen lays them. Egg cartons with the USDA grade shield on them must display the "pack date" (the day that the eggs were washed, graded, and placed in the carton). The number is a three-digit code that represents the consecutive day of the year starting with January 1 as 001 and ending with December 31 as 365. When a "sell-by" date appears on a carton bearing the USDA grade shield, the code date may not exceed 45 days from the date of pack.

Always purchase eggs before the "Sell-By" or "EXP" date on the carton. After the eggs reach home, refrigerate the eggs in their original carton and place them in the coldest part of the refrigerator, not in the door. For best quality, use eggs within 3 to 5 weeks of the date you purchase them. The "sell-by" date will usually expire during that length of time, but the eggs are perfectly safe to use.

UPC or Bar Codes

Universal Product Codes appear on packages as black lines of varying widths above a series of numbers. They are not required by regulation but manufacturers print them on most product labels because scanners at supermarkets can "read" them quickly to record the price at checkout.

Bar codes are used by stores and manufacturers for inventory purposes and marketing information. When read by a computer, they can reveal such specific information as the manufacturer's name, product name, size of product and price. The numbers are not used to identify recalled products.

Storage Times

Since product dates aren't a guide for safe use of a product, how long can the consumer store the food and still use it at top quality? Follow these tips:

- Purchase the product before the date expires.
- If perishable, take the food home immediately after purchase and refrigerate it promptly. Freeze it if you can't use it within times recommended on chart.
- Once a perishable product is frozen, it doesn't matter if the date expires because foods kept frozen continuously are safe indefinitely.
- Follow handling recommendations on product.
- Consult the following storage charts.

Refrigerator Home Storage (at 40 °F or below) of Fresh or Uncooked Products

If product has a “use-by” date, follow that date. If product has a “sell-by” date or no date, cook or freeze the product by the times on the following chart.

Refrigerator Storage of Fresh or Uncooked Products

Product	Storage Times After Purchase
Poultry	1 or 2 days
Beef, Veal, Pork and Lamb	3 to 5 days
Ground Meat and Ground Poultry	1 or 2 days
Fresh Variety Meats (Liver, Tongue, Brain, Kidneys, Heart, Chitterlings)	1 or 2 days
Cured Ham, Cook-Before-Eating	5 to 7 days
Sausage from Pork, Beef or Turkey, Uncooked	1 or 2 days
Eggs	3 to 5 weeks

Refrigerator Home Storage (at 40 °F or below) of Processed Products Sealed at Plant

If product has a "use-by" date, follow that date. If product has a "sell-by" date or no date, cook or freeze the product by the times on the following chart.

Processed Product	Unopened, After Purchase	After Opening
Cooked Poultry	3 to 4 days	3 to 4 days
Cooked Sausage	3 to 4 days	3 to 4 days
Sausage, Hard/Dry, shelf-stable	6 weeks/pantry	3 weeks
Corned Beef, uncooked, in pouch with pickling juices	5 to 7 days	3 to 4 days
Vacuum-packed Dinners, Commercial Brand with USDA seal	2 weeks	3 to 4 days
Bacon	2 weeks	7 days
Hot dogs	2 weeks	1 week
Luncheon meat	2 weeks	3 to 5 days
Ham, fully cooked	7 days	slices, 3 days; whole, 7 days
Ham, canned, labeled "keep refrigerated"	9 months	3 to 4 days
Ham, canned, shelf stable	2 years/pantry	3 to 5 days
Canned Meat and Poultry, shelf stable	2 to 5 years/pantry	3 to 4 days

Food Safety Questions?

Call the USDA Meat & Poultry Hotline

If you have a question about meat, poultry, or egg products, call the USDA Meat and Poultry Hotline toll free at

1-888-MPHotline
(1-888-674-6854).



The hotline is open Monday through Friday from 10 a.m. to 4 p.m. ET (English or Spanish).

Recorded food safety messages are available 24 hours a day. Check out the FSIS Web site at

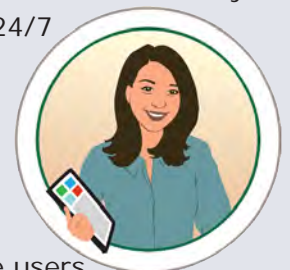
www.fsis.usda.gov

Send E-mail questions to MPHotline.fsis@usda.gov.

AskKaren.gov

FSIS' automated response system can provide food safety information 24/7

and a live chat during Hotline hours.



Mobile phone users can access m.askkaren.gov

PregunteleaKaren.gov